

## **ChenYang Haftmagnete/Greifmagnete**

**Copyright© 2021, ChenYang Technologies GmbH & Co. KG**

Alle Rechte vorbehalten. Kein Teil dieses Kataloges darf nachgedruckt werden, in einem Datenverarbeitungssystem gespeichert werden, noch in irgendeiner Form der Elektronik, Mechanik, Photokopie, Aufzeichnung oder in anderer Hinsicht übertragen werden, ohne die schriftliche Genehmigung von ChenYang Technologies GmbH & Co.KG

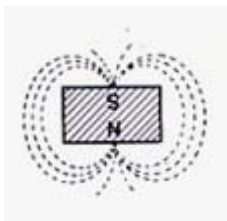
**Kontaktadresse:**

Markt Schwabener Str. 8  
D-85464 Finsing  
Germany

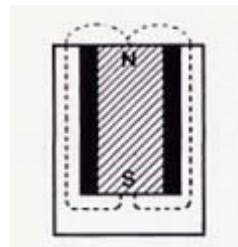
Tel: +49 (0)8121-2574100  
Fax: +49 (0)8121-2574101  
Email: [info@cy-magnetics.com](mailto:info@cy-magnetics.com)  
<http://www.cy-magnetics.com>



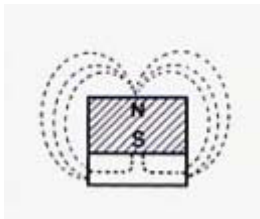
Verschiedene Haft- bzw. Greifmagnete eignen sich für zahlreiche Anwendungen in Industrien und Ingenieuren. Diese Magnete werden durch Zusammensetzen von anisotropischen Keramik, Alnico, NdFeB und SmCo Magneten in Flusstahlgehäuse hergestellt. Sie sind machbar in verschiedenen Bauformen, Beschichtungen (Nickel, Zink) und Farben (schwarz, grau, rot). Haftmagnete können bis zu 32fach stärker als die Einzelmagnete selbst sein.



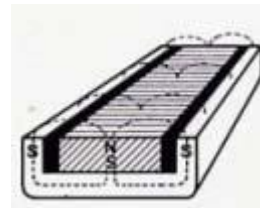
Permanentmagnet  
Haftkoeffizient 1



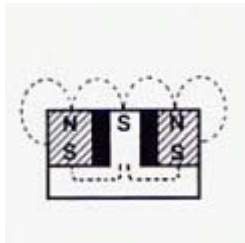
Alnico Zylinder in  
Stahltopf (Topfmagnet)  
Haftkoeffizient 7,5



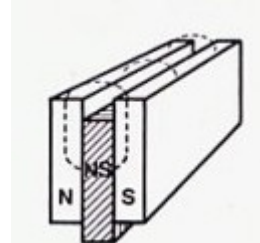
mit Stahlpolplatte  
Haftkoeffizient 1,3



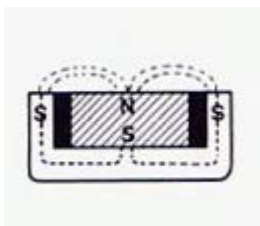
Blockmagnet in U-Form  
Stahl (U-Profil)  
Haftkoeffizient 5.5



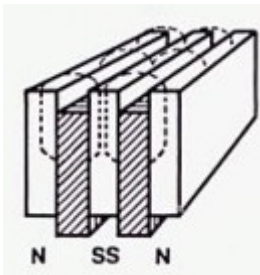
Mit Stahlpolplatte und  
Mittelpole  
Haftkoeffizient 4.5



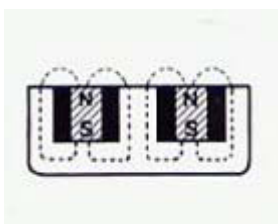
Blockmagnet zwischen  
zwei Stahlplatten  
(Sandwich-System)  
Haftkoeffizient 18



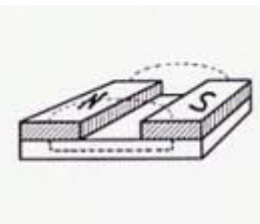
Scheibenmagnet in  
Stahltopf (Haftmagnet  
Scheibe)  
Haftkoeffizient 6



Haftmagnet besteht aus  
zwei bzw. mehreren  
Sandwich-Systemen  
Faktor 18 x Systemzahl



Ringmagnet in Stahltopf  
mit Mittelpole  
Haftkoeffizient 7



Zwei Blockmagnete  
werden auf  
Stahlpolplatte geklebt

## Haftmagnete mit NdFeB Kern

|  |  |   |  |
|--|--|---|--|
|   | <p><b>CY-NA Serie</b><br/>NdFeB, Kunststoff<br/>eingespritzt,<br/>vernickelt</p> |   | <p><b>CY-NB Serie</b><br/>NdFeB, Kunststoff<br/>eingespritzt,<br/>vernickelt</p> |
|   | <p><b>CY-NC Serie</b><br/>NdFeB, Kunststoff<br/>eingespritzt,<br/>vernickelt</p> |   | <p><b>CY-ND Serie</b><br/>NdFeB, Kunststoff<br/>eingespritzt,<br/>vernickelt</p> |
|   | <p><b>CY-NE Serie</b><br/>NdFeB, Kunststoff<br/>eingespritzt,<br/>vernickelt</p> |   | <p><b>CY-NF Serie</b><br/>NdFeB, Kunststoff<br/>eingespritzt,<br/>verzinkt</p>   |
|  | <p><b>CY-CN Serie</b><br/>NdFeB, Kunststoff<br/>eingespritzt,<br/>verzinkt</p>   |  | <p><b>CY-TN Serie</b><br/>NdFeB, Kunststoff<br/>eingespritzt, verzinkt</p>       |

## Haftmagnete mit Hartferritkern

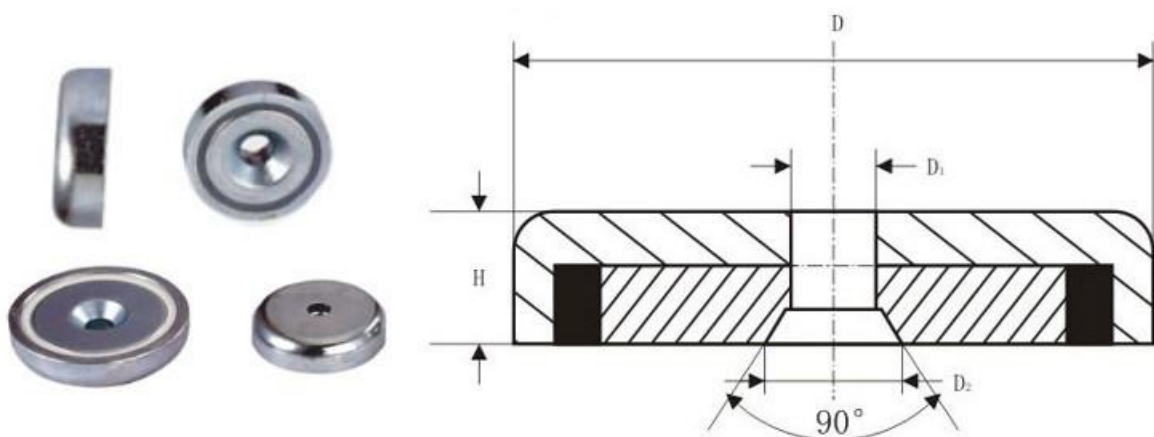
|   |   |  |   |
|---|---|--|---|
|  | <p><b>CY-F/R Serie</b><br/>Hartferrit, Kunststoff<br/>eingespritzt, verzinkt</p>                        |  | <p><b>CY-RB Serie</b><br/>Hartferrit, verchromt und<br/>verzinkt</p>              |
|  | <p><b>CY-TK Serie</b><br/>Hartferrit, mit Haken,<br/>Kunststoff eingespritzt,<br/>farbig gestrichen</p> |  | <p><b>CY-T/TM Serie</b><br/>Hartferrit, Kunststoff<br/>eingespritzt, verzinkt</p> |
|  | <p><b>CY-TD Serie</b><br/>Hartferrit, ohne Haken,<br/>Kunststoff eingespritzt<br/>verzinkt</p>          |  | <p><b>CY-65C Serie</b><br/>Hartferrit, verzinkt</p>                               |

## Haftmagnete mit Alnico Kern

|   |  |  |   |
|---|--|--|---|
|  | <p><b>CY-BM Serie</b><br/>Alnico mit Gewinde,<br/>Messingring, rot<br/>gestrichen</p>  |  | <p><b>CY-A Serie</b><br/>Alnico, Messingring, rot<br/>gestrichen</p>                  |
|  | <p><b>CY-AM Serie</b><br/>Alnico, mit Gewinde,<br/>Messingring, rot<br/>gestrichen</p> |  | <p><b>CY-AB Serie</b><br/>Alnico, mit Bolzen,<br/>Messingring, rot<br/>gestrichen</p> |

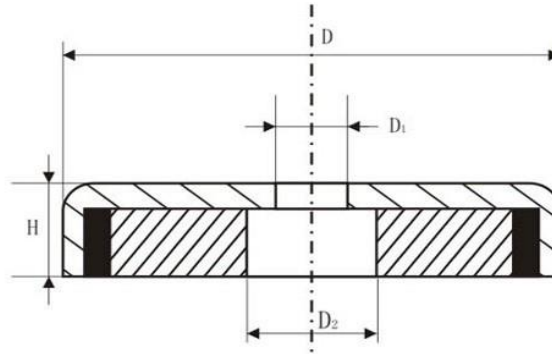
## Haftmagnete mit NdFeB Kern

### CY-NA Serie, NdFeB Kunststoff eingespritzt, vernickelt



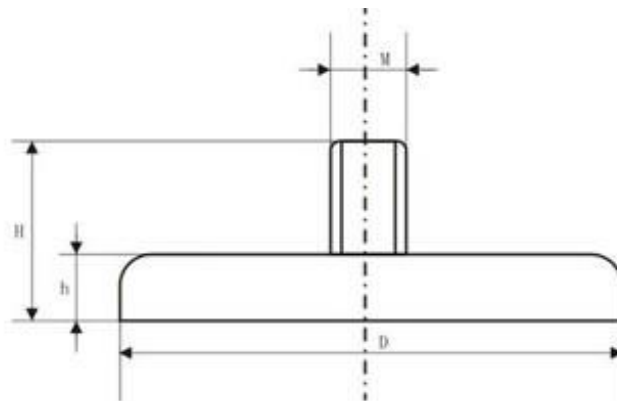
| Typ     | Dimension (mm) |      |      |      | Gewicht (g) | Haftkraft (kg) |
|---------|----------------|------|------|------|-------------|----------------|
|         | ØD             | Ød1  | Ød2  | H    |             |                |
| CY-NA16 | 16             | 3.5  | 6.5  | 5    | 7           | 4.5            |
| CY-NA20 | 20             | 4.5  | 8.6  | 7    | 13          | 6              |
| CY-NA25 | 25             | 5.5  | 10.4 | 8    | 23          | 14             |
| CY-NA32 | 32             | 5.5  | 10.4 | 8    | 39          | 25             |
| CY-NA36 | 36             | 6.5  | 12   | 9    | 52          | 29             |
| CY-NA42 | 42             | 6.5  | 12   | 9    | 76          | 37             |
| CY-NA48 | 48             | 8.5  | 16   | 11.5 | 120         | 68             |
| CY-NA60 | 60             | 8.5  | 16   | 15   | 252         | 112            |
| CY-NA75 | 75             | 10.5 | 19   | 18   | 488         | 162            |

## CY-NB Serie, NdFeB Kunststoff eingespritzt, vernickelt



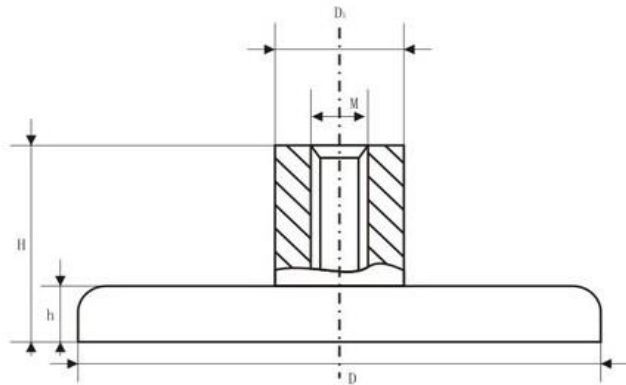
| Typ     | Dimension (mm) |      |     |      | Gewicht (g) | Haftkraft (kg) |
|---------|----------------|------|-----|------|-------------|----------------|
|         | ØD             | Ød1  | Ød2 | H    |             |                |
| CY-NB16 | 16             | 3.5  | 6.5 | 5    | 6           | 4.0            |
| CY-NB20 | 20             | 4.5  | 8   | 7    | 12          | 6              |
| CY-NB25 | 25             | 5.5  | 9   | 8    | 23          | 14             |
| CY-NB32 | 32             | 5.5  | 9   | 8    | 36          | 23             |
| CY-NB36 | 36             | 6.5  | 11  | 9    | 50          | 29             |
| CY-NB42 | 42             | 6.5  | 11  | 9    | 73          | 32             |
| CY-NB48 | 48             | 8.5  | 15  | 11.5 | 114         | 63             |
| CY-NB60 | 60             | 8.5  | 15  | 15   | 240         | 95             |
| CY-NB75 | 75             | 10.5 | 18  | 18   | 471         | 155            |

## CY-NC Serie, NdFeB Kunststoff eingespritzt, vernickelt



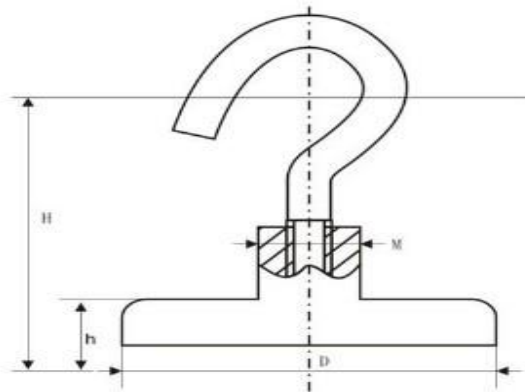
| Typ     | Dimensions (mm) |    |    |      | Gewicht (g) | Haftkraft (kg) |
|---------|-----------------|----|----|------|-------------|----------------|
|         | ØD              | M  | H  | h    |             |                |
| CY-NC10 | 10              | 3  | 12 | 5    | 3.5         | 2.2            |
| CY-NC12 | 12              | 3  | 13 | 5    | 5           | 3.2            |
| CY-NC16 | 16              | 4  | 13 | 5    | 7.5         | 5.5            |
| CY-NC20 | 20              | 4  | 15 | 7    | 16          | 9              |
| CY-NC25 | 25              | 5  | 17 | 8    | 30          | 22             |
| CY-NC32 | 32              | 6  | 18 | 8    | 45          | 34             |
| CY-NC36 | 36              | 6  | 18 | 8    | 57          | 41             |
| CY-NC42 | 42              | 8  | 20 | 9    | 84          | 68             |
| CY-NC48 | 48              | 8  | 24 | 11.5 | 130         | 81             |
| CY-NC60 | 60              | 8  | 30 | 15   | 254         | 113            |
| CY-NC75 | 75              | 10 | 34 | 15   | 550         | 164            |

## CY-ND Serie, NdFeB Kunststoff eingespritzt, vernickelt



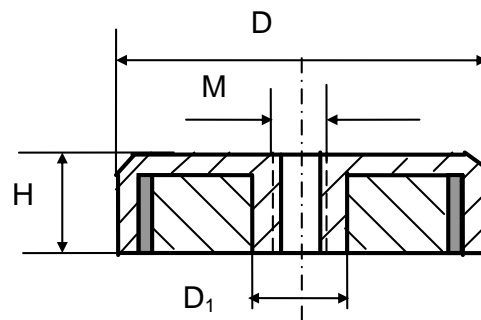
| Typ     | Dimensions (mm) |                 |    |    |      | Gewicht (g) | Haftkraft (kg) |
|---------|-----------------|-----------------|----|----|------|-------------|----------------|
|         | ØD              | ØD <sub>1</sub> | M  | H  | h    |             |                |
| CY-ND10 | 10              | 5.5             | 3  | 12 | 5    | 4.2         | 2.2            |
| CY-ND12 | 12              | 6               | 3  | 13 | 5    | 5.6         | 3.2            |
| CY-ND16 | 16              | 6               | 4  | 13 | 5    | 8           | 5.5            |
| CY-ND20 | 20              | 8               | 4  | 15 | 7    | 17          | 9              |
| CY-ND25 | 25              | 10              | 5  | 17 | 8    | 32          | 22             |
| CY-ND32 | 32              | 10              | 6  | 18 | 8    | 47          | 34             |
| CY-ND36 | 36              | 10              | 6  | 18 | 8    | 59          | 41             |
| CY-ND42 | 42              | 12              | 6  | 20 | 9    | 87          | 68             |
| CY-ND48 | 48              | 12              | 8  | 24 | 11.5 | 132         | 81             |
| CY-ND60 | 60              | 14              | 8  | 30 | 15   | 270         | 113            |
| CY-ND75 | 75              | 16              | 10 | 34 | 18   | 552         | 164            |

## CY-NE Serie, NdFeB Kunststoff eingespritzt, vernickelt



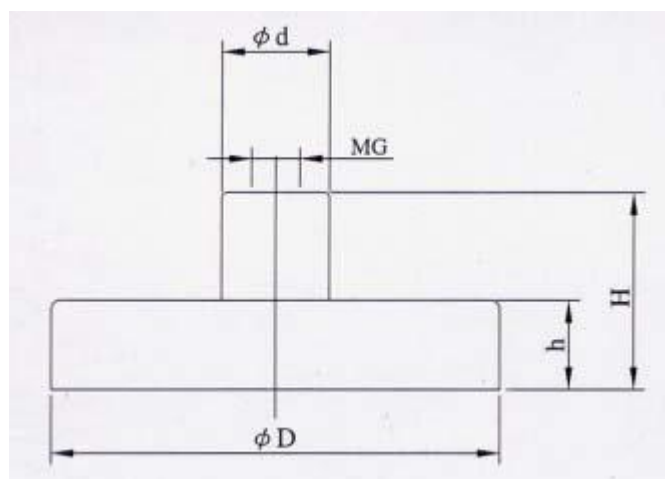
| Typ     | Dimension (mm) |    |    |      | Gewicht (g) | Haftkraft (kg) |
|---------|----------------|----|----|------|-------------|----------------|
|         | ØD             | M  | H  | h    |             |                |
| CY-NE16 | 16             | 4  | 14 | 5    | 11          | 5.5            |
| CY-NE20 | 20             | 4  | 14 | 7    | 21          | 9              |
| CY-NE25 | 25             | 5  | 15 | 8    | 37          | 22             |
| CY-NE32 | 32             | 6  | 16 | 8    | 56          | 34             |
| CY-NE36 | 36             | 6  | 16 | 8    | 68          | 41             |
| CY-NE42 | 42             | 6  | 16 | 9    | 97          | 68             |
| CY-NE48 | 48             | 8  | 23 | 11.5 | 154         | 81             |
| CY-NE60 | 60             | 8  | 23 | 15   | 282         | 113            |
| CY-NE75 | 75             | 10 | 25 | 18   | 560         | 164            |

## CY-NF Serie, NdFeB Kunststoff eingespritzt, verzinkt



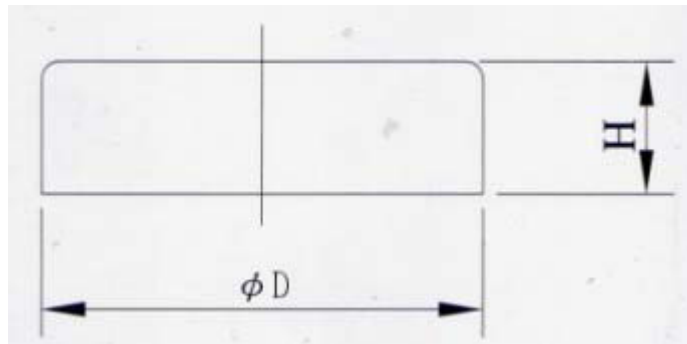
| Typ     | Dimension (mm) |    |                 |      | Gewicht (g) | Haftkraft (kg) |
|---------|----------------|----|-----------------|------|-------------|----------------|
|         | ØD             | M  | ØD <sub>1</sub> | H    |             |                |
| CY-NF16 | 16             | 4  | 7               | 6    | 8           | 4.0            |
| CY-NF20 | 20             | 4  | 8               | 7    | 15          | 6              |
| CY-NF25 | 25             | 5  | 9               | 8    | 27          | 14             |
| CY-NF32 | 32             | 6  | 9               | 8    | 44          | 23             |
| CY-NF36 | 36             | 6  | 11              | 9    | 63          | 29             |
| CY-NF42 | 42             | 6  | 11              | 9    | 86          | 32             |
| CY-NF48 | 48             | 8  | 15              | 11.5 | 144         | 63             |
| CY-NF60 | 60             | 8  | 15              | 15   | 295         | 95             |
| CY-NF75 | 75             | 10 | 18              | 18   | 454         | 155            |

## CY-TN Serie, NdFeB Kunststoff eingespritzt, verzinkt



| Typ     | Dimension (mm) |    |      |     |    | Gewicht (g) | Haftkraft (N) |
|---------|----------------|----|------|-----|----|-------------|---------------|
|         | ØD             | Ød | H    | h   | MG |             |               |
| CY-TN6  | 6              | 6  | 11.5 | 4.5 | M3 | 2           | 5             |
| CY-TN8  | 8              | 6  | 11.5 | 4.5 | M3 | 2           | 13            |
| CY-TN10 | 10             | 6  | 11.5 | 4.5 | M3 | 3           | 25            |
| CY-TN13 | 13             | 6  | 11.5 | 4.5 | M3 | 5           | 60            |
| CY-TN16 | 16             | 6  | 11.5 | 4.5 | M4 | 8           | 95            |
| CY-TN20 | 20             | 8  | 13   | 6   | M4 | 16          | 140           |
| CY-TN25 | 25             | 8  | 14   | 7   | M4 | 25          | 220           |
| CY-TN32 | 32             | 10 | 15.5 | 7   | M5 | 48          | 350           |

## CY-CN Serie, NdFeB Kunststoff eingespritzt, verzinkt

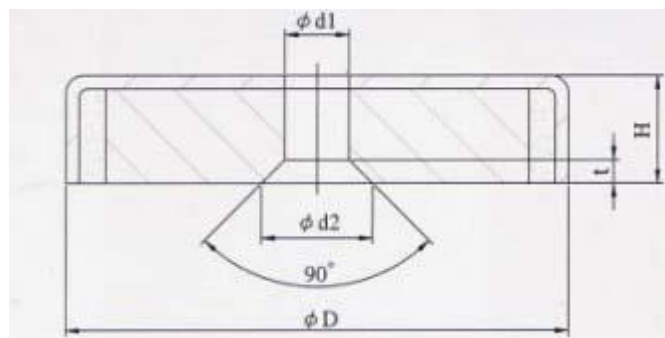


| Typ     | Dimension (mm) |     | Gewicht (g) | Haftkraft (N) |
|---------|----------------|-----|-------------|---------------|
|         | $\phi D$       | H   |             |               |
| CY-CN6  | 6              | 4.5 | 2           | 5             |
| CY-CN8  | 8              | 4.5 | 2           | 13            |
| CY-CN10 | 10             | 4.5 | 3           | 25            |
| CY-CN13 | 13             | 4.5 | 5           | 60            |
| CY-CN16 | 16             | 4.5 | 7           | 95            |
| CY-CN20 | 20             | 6   | 15          | 140           |
| CY-CN25 | 25             | 7   | 22          | 200           |
| CY-CN32 | 32             | 7   | 40          | 350           |

## Haftmagnete mit Hartferritkern

### CY-F und CY-R Serie, Hartferrit, Kunststoff eingespritzt, verzinkt

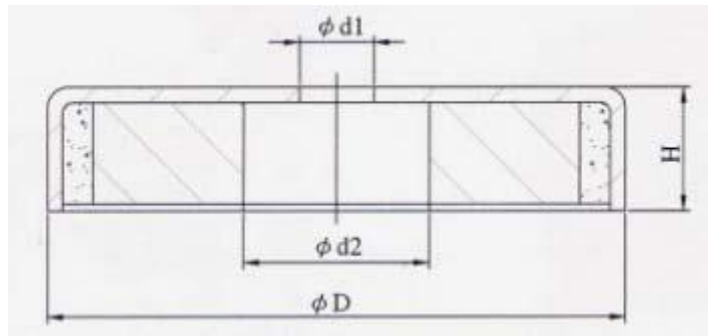
#### CY-F Serie



| Typ    | Dimension (mm) |     |           |           |     | Gewicht (g) | Haftkraft (N) |
|--------|----------------|-----|-----------|-----------|-----|-------------|---------------|
|        | $\phi D$       | H   | $\phi d1$ | $\phi d2$ | t   |             |               |
| CY-F16 | 16             | 4.5 | 3.5       | 6.7       | 1.6 | 4.0         | 10            |
| CY-F20 | 20             | 6   | 4.2       | 8.6       | 2.1 | 9           | 27            |
| CY-F25 | 25             | 7   | 5.5       | 10.4      | 2.5 | 16          | 36            |
| CY-F32 | 32             | 7   | 5.5       | 10.4      | 2.5 | 28          | 72            |
| CY-F40 | 40             | 8   | 5.5       | 10.4      | 2.5 | 54          | 90            |

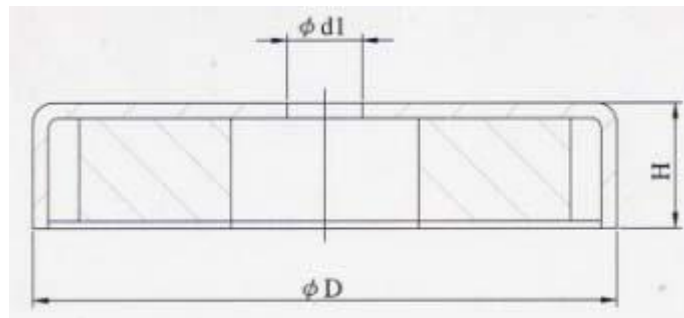


### CY-R Serie



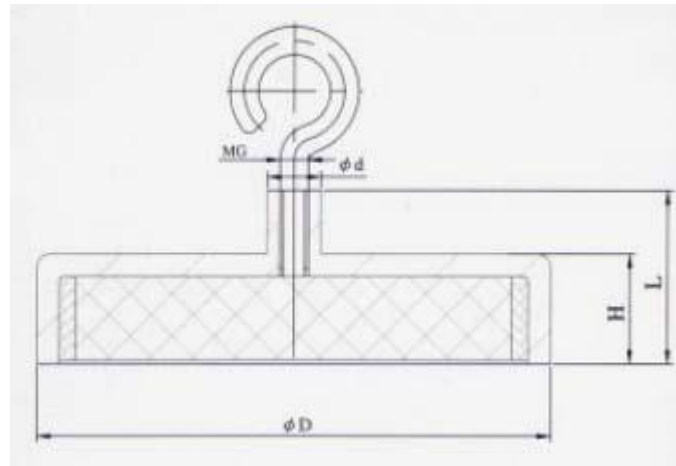
| Typ     | Dimension (mm) |    |      |      | Gewicht (g) | Haftkraft (N) |
|---------|----------------|----|------|------|-------------|---------------|
|         | ØD             | H  | Ød1  | Ød2  |             |               |
| CY-R40  | 40             | 8  | 8.5  | 18   | 55          | 90            |
| CY-R50  | 50             | 10 | 8.5  | 22   | 90          | 180           |
| CY-R63  | 63             | 14 | 6.5  | 24   | 195         | 290           |
| CY-R80  | 80             | 18 | 6.5  | 11.5 | 480         | 540           |
| CY-R100 | 100            | 22 | 10.5 | 34   | 820         | 680           |

### CY-RB Serie, Hartferrit, verchromt und verzinkt



| Typ     | Dimension (mm) |       |      | Gewicht (g) | Haftkraft (1bs) |
|---------|----------------|-------|------|-------------|-----------------|
|         | ØD             | H     | Ød   |             |                 |
| CY-RB20 | 30.61          | 4.78  | 3.18 | 16          | 3               |
| CY-RB40 | 36.07          | 6.86  | 4.75 | 34          | 12              |
| CY-RB50 | 51.56          | 7.62  | 4.87 | 65          | 25              |
| CY-RB60 | 60.32          | 8.89  | 6.86 | 120         | 40              |
| CY-RB70 | 66.68          | 9.53  | 7.11 | 150         | 65              |
| CY-RB75 | 71.42          | 9.4   | 6.86 | 175         | 68              |
| CY-RB80 | 81.28          | 10.67 | 7.11 | 240         | 95              |
| CY-RB85 | 96.27          | 12.96 | 9.65 | 420         | 110             |
| CY-RB90 | 124.46         | 12.37 | 12.7 | 700         | 180             |

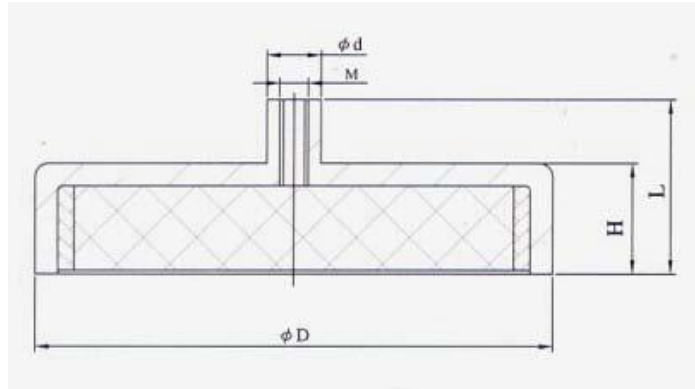
**CY-TK Serie, Hartferrit, mit Haken, Kunststoff eingespritzt,  
farbig gestrichen**



| Typ      | Dimension (mm) |      |      |          |     | Gewicht(g) | Haftkraft (N) |
|----------|----------------|------|------|----------|-----|------------|---------------|
|          | $\phi D$       | H    | L    | $\phi d$ | MG  |            |               |
| CY-TK16  | 16             | 4.5  | 11.5 | 6        | M3  | 6          | 15            |
| CY-TK20  | 20             | 6    | 13   | 6        | M3  | 12         | 22            |
| CY-TK25  | 25             | 7    | 15   | 8        | M4  | 24         | 40            |
| CY-TK32  | 32             | 7    | 15   | 8        | M4  | 34         | 80            |
| CY-TK36  | 36             | 7.7  | 16   | 8        | M4  | 48         | 100           |
| CY-TK40  | 40             | 8    | 16.5 | 8        | M4  | 60         | 125           |
| CY-TK40B | 40             | 7.7  | 18   | 10       | M5  | 60         | 125           |
| CY-TK47  | 47             | 9    | 17   | 8        | M4  | 90         | 180           |
| CY-TK50  | 50             | 10   | 18.5 | 8        | M4  | 110        | 220           |
| CY-TK50B | 50             | 10   | 22   | 12       | M6  | 110        | 220           |
| CY-TK57  | 57             | 10.5 | 18.5 | 8        | M4  | 150        | 280           |
| CY-TK63  | 63             | 14   | 30   | 15       | M8  | 242        | 350           |
| CY-TK80  | 80             | 18   | 34   | 20       | M10 | 522        | 600           |
| CY-TK100 | 100            | 22   | 43   | 22       | M12 | 940        | 900           |

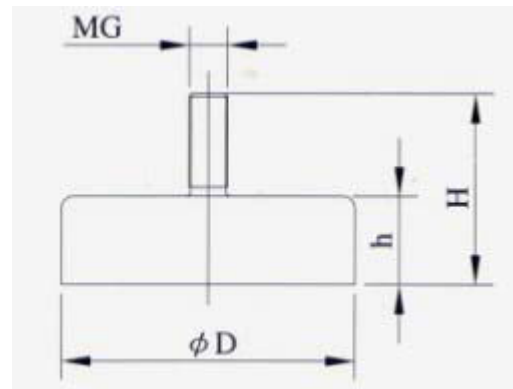
## CY-T und CY-TM Serie, Hartferrit, Kunststoff eingespritzt, verzinkt

### CY-T Serie



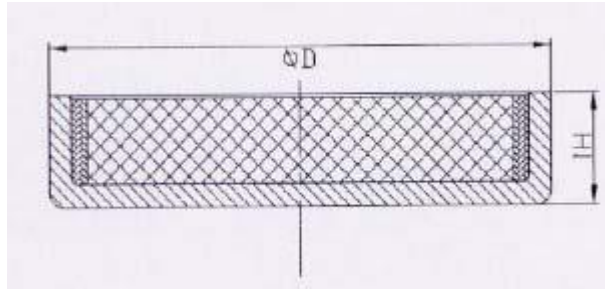
| Typ     | Dimension (mm) |      |      |    |     | Gewicht (g) | Haftkraft (N) |
|---------|----------------|------|------|----|-----|-------------|---------------|
|         | ØD             | H    | L    | Ød | MG  |             |               |
| CY-T16  | 16             | 4.5  | 11.5 | 6  | M3  | 6           | 15            |
| CY-T20  | 20             | 6    | 13   | 6  | M3  | 11          | 22            |
| CY-T25  | 25             | 7    | 15   | 8  | M4  | 22          | 40            |
| CY-T32  | 32             | 7    | 15   | 8  | M4  | 32          | 80            |
| CY-T36  | 36             | 7.7  | 16   | 8  | M4  | 46          | 100           |
| CY-T40  | 40             | 8    | 16.5 | 8  | M4  | 58          | 125           |
| CY-T40B | 40             | 8    | 18   | 10 | M5  | 58          | 125           |
| CY-T47  | 47             | 9    | 17   | 8  | M4  | 88          | 180           |
| CY-T50  | 50             | 10   | 18.5 | 8  | M4  | 108         | 220           |
| CY-T50B | 50             | 10   | 22   | 12 | M6  | 108         | 220           |
| CY-T57  | 57             | 10.5 | 18.5 | 8  | M4  | 148         | 280           |
| CY-T63  | 63             | 14   | 30   | 15 | M8  | 240         | 350           |
| CY-T80  | 80             | 18   | 34   | 20 | M10 | 520         | 600           |
| CY-T100 | 100            | 22   | 43   | 22 | M12 | 940         | 900           |

### CY-TM Serie



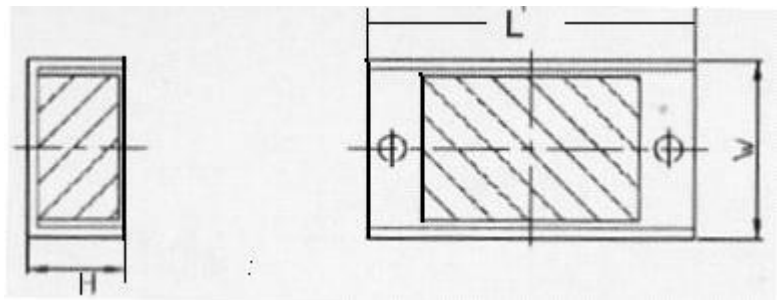
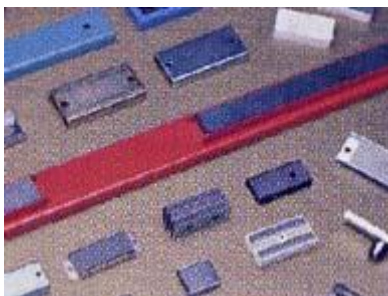
| Typ     | Dimension (mm) |      |     |    | Gewicht (g) | Haftkraft (N) |
|---------|----------------|------|-----|----|-------------|---------------|
|         | ØD             | H    | h   | MG |             |               |
| CY-TM10 | 10             | 11.5 | 4.5 | M3 | 3           | 4             |
| CY-TM13 | 13             | 11.5 | 4.5 | M3 | 5           | 10            |
| CY-TM16 | 16             | 11.5 | 4.5 | M3 | 6           | 15            |
| CY-TM20 | 20             | 13   | 6   | M3 | 11          | 22            |
| CY-TM25 | 25             | 15   | 7   | M4 | 22          | 40            |
| CY-TM32 | 32             | 15   | 7   | M4 | 32          | 80            |

## CY-TD Serie, ohne Haken, Hartferrit, Kunststoff eingespritzt, verzinkt



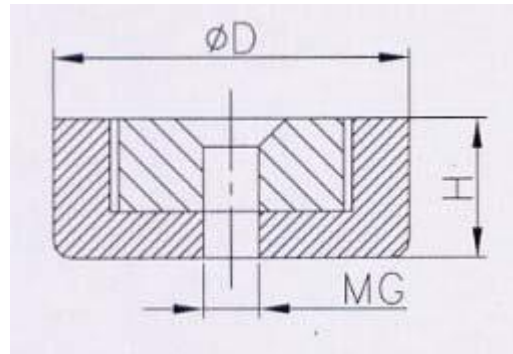
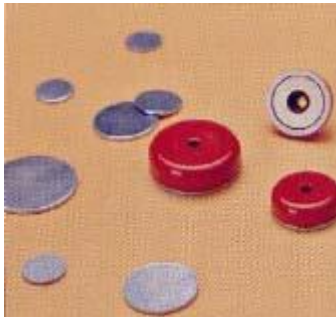
| Typ     | Dimension (mm) |      | Gewicht (g) | Haftkraft (N) |
|---------|----------------|------|-------------|---------------|
|         | ØD             | H    |             |               |
| CY-TD10 | 10             | 4.5  | 2           | 3             |
| CY-TD13 | 13             | 4.5  | 3           | 5             |
| CY-TD16 | 16             | 4.8  | 5           | 15            |
| CY-TD20 | 20             | 6    | 10          | 22            |
| CY-TD25 | 25             | 7    | 19          | 40            |
| CY-TD32 | 32             | 7    | 30          | 80            |
| CY-TD36 | 36             | 7.7  | 40          | 100           |
| CY-TD40 | 40             | 8    | 55          | 125           |
| CY-TD47 | 47             | 9    | 80          | 180           |
| CY-TD50 | 50             | 10   | 100         | 220           |
| CY-TD57 | 57             | 10.5 | 140         | 220           |
| CY-TD63 | 63             | 14   | 230         | 350           |
| CY-TD80 | 80             | 18   | 485         | 600           |

## CY-65C Serie, Hartferrit, verzinkt



| Typ      | Dimension (mm) |       |        | Gewicht (g) | Haftkraft (lbs) |
|----------|----------------|-------|--------|-------------|-----------------|
|          | L(mm)          | W(mm) | H (mm) |             |                 |
| CY-65C01 | 68.58          | 26.42 | 11.63  | 60          | 25              |
| CY-65C02 | 76.20          | 38.10 | 11.60  | 152         | 60              |
| CY-65C03 | 200            | 26.92 | 12.14  | 240         | 200             |

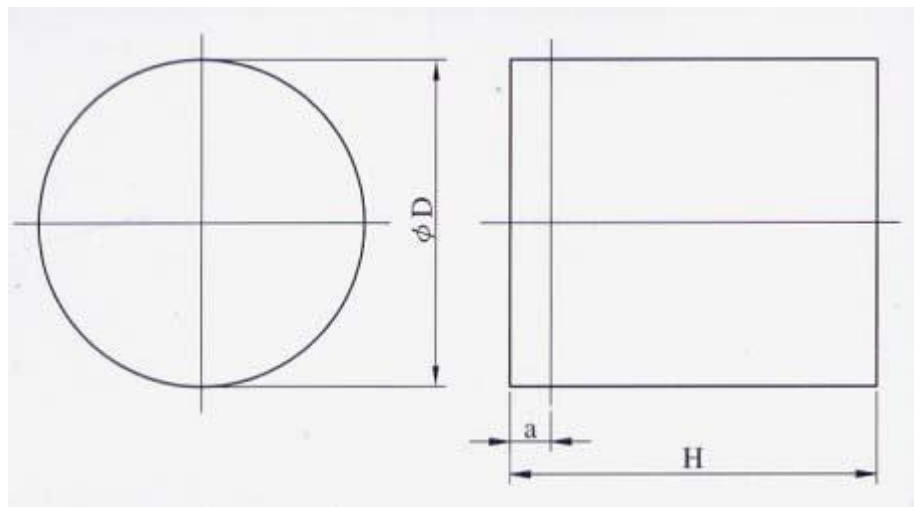
## CY-BM Serie, Alnico, mit Gewinde, Messingring, rot gestrichen



| Typ    | Dimension (mm) |     |       | Gewicht (g) | Haftkraft (N) |
|--------|----------------|-----|-------|-------------|---------------|
|        | ØD(mm)         | MG  | H(mm) |             |               |
| CY-BM6 | 19.1           | 3.7 | 7.5   | 17          | 30            |
| CY-BM7 | 28.5           | 4.8 | 8.5   | 43          | 40            |
| CY-BM8 | 38.1           | 4.8 | 10.4  | 94          | 100           |

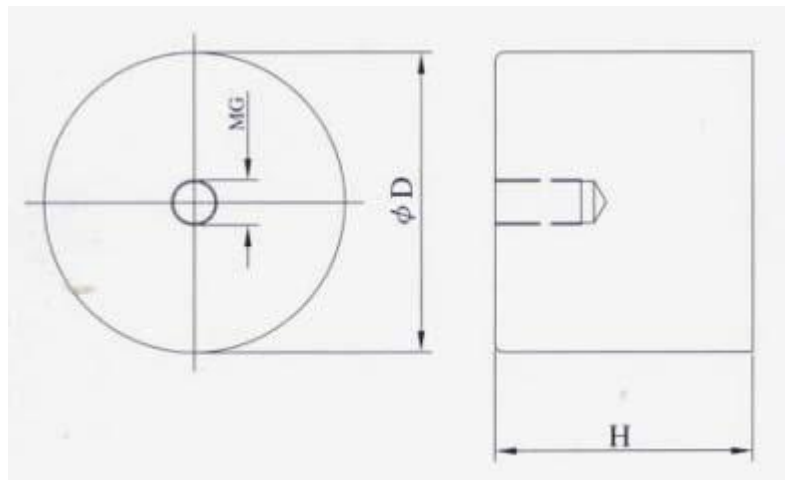
## CY-A Serie, Alnico, Messingring, rot gestrichen

### CY-A Serie



| Typ    | Dimension (mm) |    |    | Gewicht (g) | Haftkraft (N) |
|--------|----------------|----|----|-------------|---------------|
|        | ØD             | H  | a  |             |               |
| CY-A6  | 6              | 20 | 12 | 4           | 1.5           |
| CY-A8  | 8              | 20 | 11 | 7           | 3.5           |
| CY-A10 | 10             | 20 | 10 | 10          | 7             |
| CY-A13 | 13             | 20 | 8  | 19          | 10            |
| CY-A16 | 16             | 20 | 6  | 29          | 18            |
| CY-A20 | 20             | 25 | 6  | 57          | 42            |
| CY-A25 | 25             | 35 | 15 | 140         | 96            |
| CY-A32 | 32             | 40 | 10 | 240         | 180           |
| CY-A40 | 40             | 50 | 10 | 500         | 240           |
| CY-A50 | 50             | 60 | 12 | 900         | 420           |
| CY-A63 | 63             | 65 | 10 | 1480        | 660           |

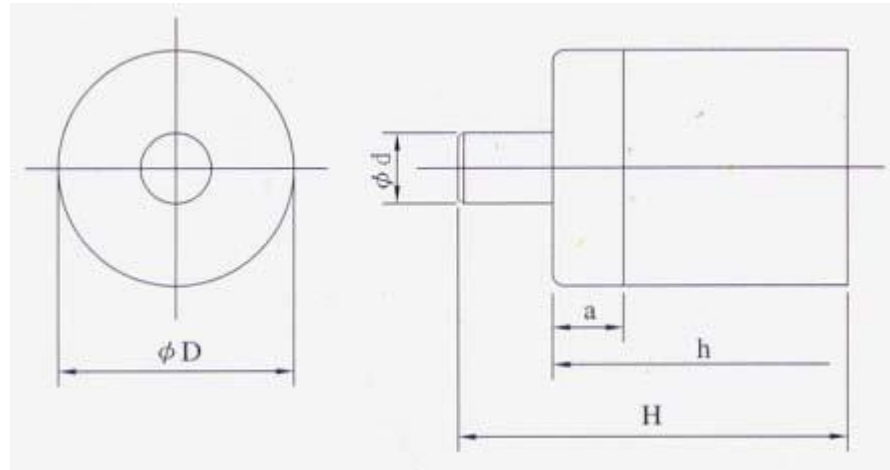
## CY-AM Serie, Alnico, mit Gewinde, Messingring, rot gestrichen



| Typ     | Dimension (mm) |    |      | Gewicht (g) | Haftkraft (N) |
|---------|----------------|----|------|-------------|---------------|
|         | ØD             | H  | MG   |             |               |
| CY-AM6  | 6              | 20 | M3x5 | 3.5         | 1.5           |
| CY-AM8  | 8              | 20 | M3x5 | 6.5         | 3.5           |
| CY-AM10 | 10             | 20 | M4x7 | 9.5         | 7             |
| CY-AM13 | 13             | 20 | M4x7 | 18          | 10            |
| CY-AM16 | 16             | 20 | M4x5 | 27.5        | 18            |
| CY-AM20 | 20             | 25 | M6x7 | 55          | 42            |
| CY-AM25 | 25             | 35 | M6x9 | 140         | 96            |
| CY-AM32 | 32             | 40 | M8x9 | 240         | 180           |

| Typ      | Dimension (mm) |     |    | Gewicht (g) | Haftkraft (N) |
|----------|----------------|-----|----|-------------|---------------|
|          | ØD             | MG  | H  |             |               |
| CY-A1716 | 17.5           | M6  | 16 | 29          | 22            |
| CY-A2019 | 20.6           | M6  | 19 | 48          | 35            |
| CY-A2725 | 27             | M6  | 25 | 108         | 65            |
| CY-A3530 | 35             | M6  | 30 | 220         | 142           |
| CY-A6543 | 65             | M12 | 43 | 1080        | 400           |

## CY-AB Serie, Alnico, mit Bolzen, Messingring, rot gestrichen



| Typ     | Dimension (mm)  |                 |    |    |    | Gewicht (g) | Haftkraft (N) |
|---------|-----------------|-----------------|----|----|----|-------------|---------------|
|         | $\varnothing D$ | $\varnothing d$ | H  | h  | a  |             |               |
| CY-AB6  | 6               | 3               | 28 | 20 | 12 | 4           | 1.5           |
| CY-AB8  | 8               | 3               | 28 | 20 | 10 | 7           | 3.5           |
| CY-AB10 | 10              | 4               | 28 | 20 | 10 | 12          | 7             |
| CY-AB13 | 13              | 4               | 28 | 20 | 8  | 20          | 10            |
| CY-AB16 | 16              | 5               | 28 | 20 | 6  | 30          | 18            |
| CY-AB20 | 20              | 6               | 33 | 25 | 6  | 60          | 42            |
| CY-AB25 | 25              | 8               | 45 | 35 | 15 | 140         | 96            |
| CY-AB32 | 32              | 10              | 50 | 40 | 10 | 250         | 180           |
| CY-AB40 | 40              | 15              | 70 | 50 | 10 | 520         | 240           |
| CY-AB50 | 50              | 18              | 85 | 60 | 12 | 925         | 420           |
| CY-AB63 | 63              | 20              | 95 | 65 | 10 | 1580        | 660           |